



Information

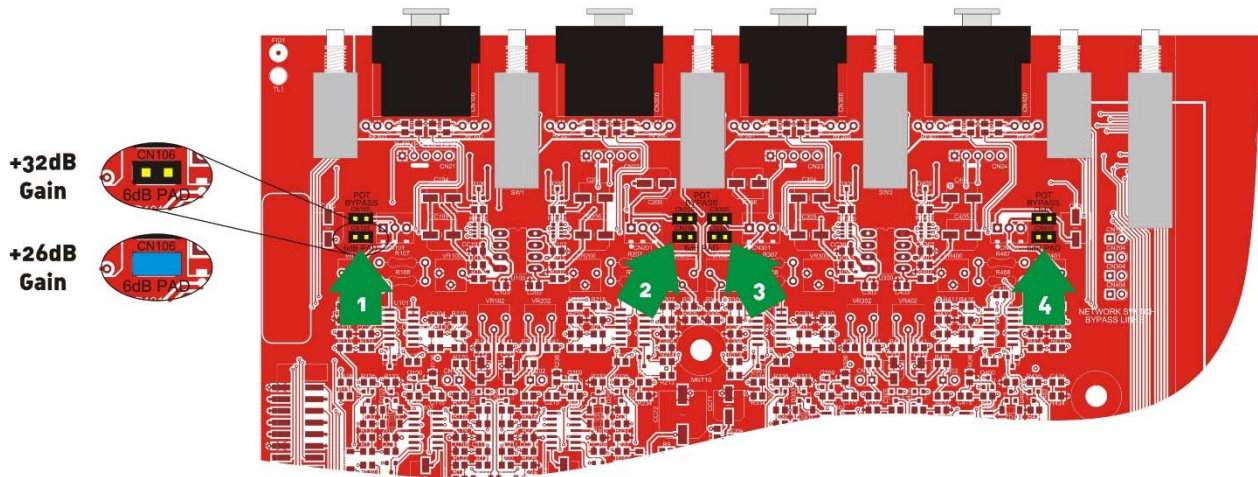
DNA Series Amplifiers – Internal Gain Links

Warning

These instructions are for use by qualified personnel only. Before any routine maintenance, please ensure that your amplifier is disconnected from the mains supply!

Gain/Sensitivity Settings

Adjustment is by adding a link on the input PCB – one link for each channel.
Channel A's link is number 1 (CN106), channel B's is number 2 (CN206) and so on.
The gain may be set to 26, or 32 (factory default setting).



Remember, setting higher gain does not change the maximum available power but changes the level of signal input to achieve maximum power. In any case, provided that the input signal is less than 20dBu/7.7V, the built in limiter circuit will prevent distortion within the amplifier.

The gain should be set to match the signal level from the source – using the network audio inputs will normally result in the amplifier running “hotter” than usual, so adding these links and turning down the front panel attenuators will help.

