



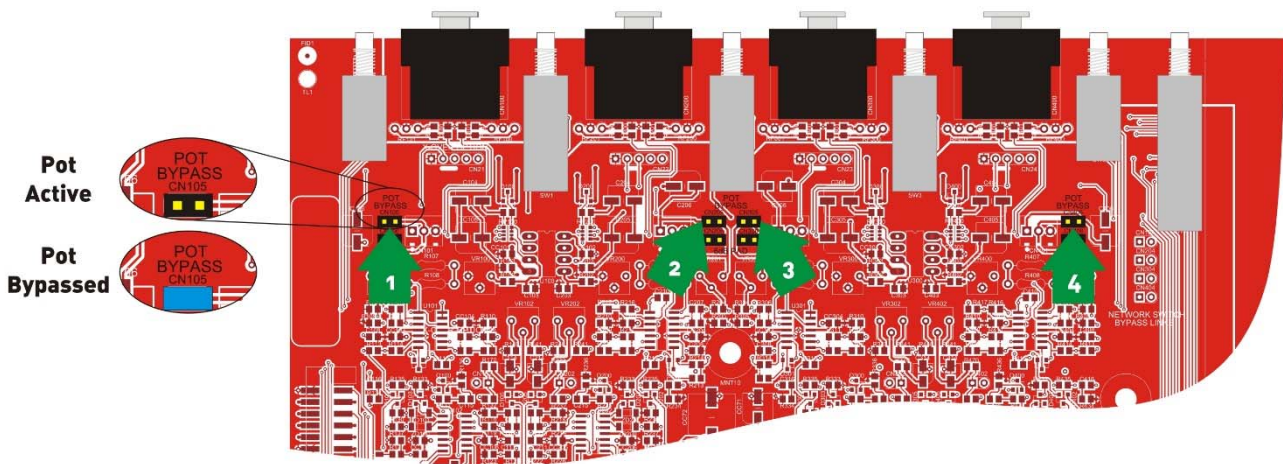
Information

DNA Series Amplifiers – Disable Front Panel Controls

Warning

These instructions are for use by qualified personnel only. Before any routine maintenance, please ensure that your amplifier is disconnected from the mains supply!

For added security the front panel potentiometers can be disabled, preventing unwanted tampering with gain settings of any amplifier. This is achieved by setting links on the input board internally.



Adding a link to CN105 disables the pot for channel A, CN205 disables the pot for channel B, and so on.

Once disabled, the pot gain is set to 0dB (no attenuation).

Ensure that all four links are added/removed together to avoid any confusion and unnecessary service calls!

