

# Contents

---

<b>Thanks</b>	<b>2</b>
<b>Introduction</b>	<b>2</b>
<b>Installation</b>	<b>3</b>
<b>Starting the Software</b>	<b>5</b>
<b>Menu Bar and Tool Bar Summary Guides</b>	<b>7</b>
Toolbar Summary	8
<b>Adding New Presets to the Library</b>	<b>9</b>
<b>The Gain Screen</b>	<b>11</b>
Locking Gains and Phase Reverse.	11
<b>The Delay Screen</b>	<b>13</b>
Locking and Ganging Delays.	13
<b>The Limiter Screen</b>	<b>15</b>
Locking Limiters.	15
<b>The Equalisation and Crossover Screens</b>	<b>16</b>
Editing with Curve Drag Features	16
Editing with Direct Filter Control	17
Crossover Settings	18
Locking the EQ and Crossover.	19
Additional Controls and Notes	19
<b>File Locking</b>	<b>20</b>
<b>Assembling Presets into a Set</b>	<b>21</b>
<b>Connecting a DP226 to the Computer</b>	<b>22</b>
RS232 Connection (Single Unit)	22
<b>Downloading the File to a Unit</b>	<b>23</b>
<b>Frequently Asked Questions</b>	<b>24</b>
<b>Troubleshooting Guide</b>	<b>26</b>



## Thanks

---

Thank you for choosing the XTA  Library Manager for Windows™ software.

Please spend a little time reading through this manual, so that you obtain the best possible performance from your purchase. All XTA products are carefully designed and engineered for cutting-edge performance and world-class reliability. If you would like further information about this or any other XTA product, please contact us. We look forward to hearing from you in the near future.



## Introduction

---

This manual covers the installation and use of XTA's proprietary software package known as 'Library Manager'. This software is a remote control application running under Microsoft Windows™, and is compatible with the following XTA products:

- ◆ The DP226 Speaker Management System
- ◆ The DP224 Speaker Management System

The software is designed to provide an easy method of designing and managing crossover configurations (or presets) for use with the DP224/6, and to permit the creation of a file containing up to 40 presets which may be downloaded to the DP224/6, where it is stored in EEPROM (non-volatile memory).

The remote control interface used for the download procedure is an RS232 port (the 'COM' port on every computer); this may also be used to connect the unit in real-time, effectively auditioning the crossover design on-line.

For the latest information about XTA's software and product range, visit the website at


[www.xta.co.uk](http://www.xta.co.uk).



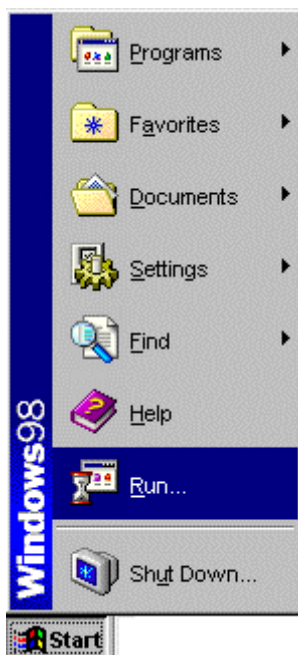
## Installation

---

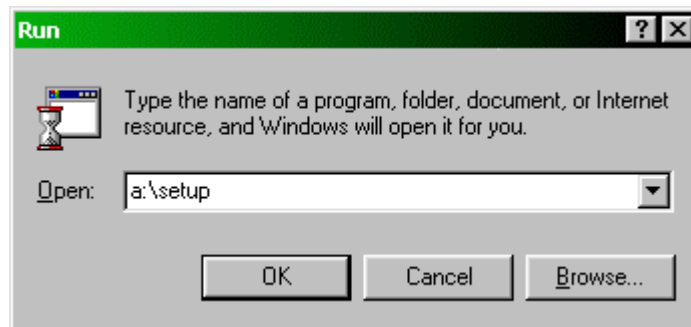
Please note that this software will not run under Windows™ 3.1 or 3.11. It is designed for Windows™ 95/98/NT4.

Follow these steps to install your copy of  Library Manager for Windows™.

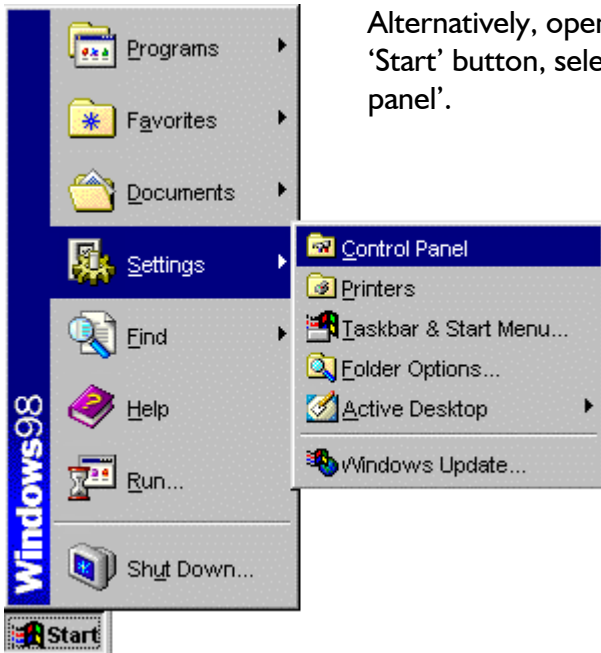
Insert the disk supplied into floppy disk drive A on your computer. It is recommended that you close all other applications before attempting to install this software. This is true during all software installation, and is not peculiar to this package.



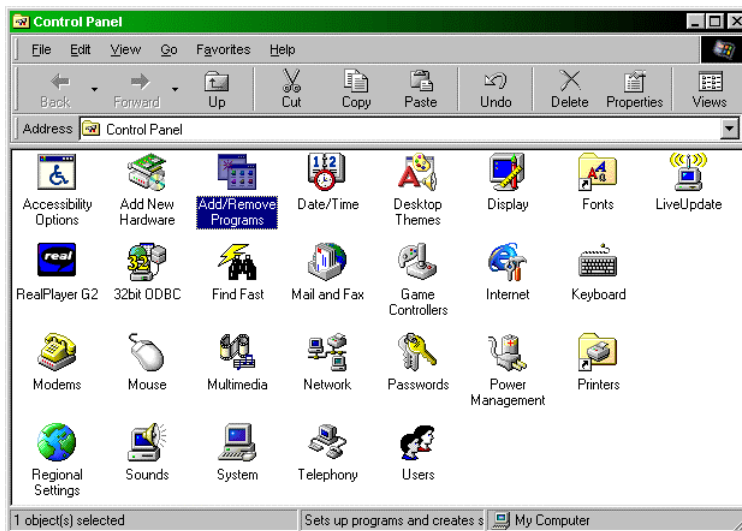
Click on the 'Start' button on the toolbar, and select 'Run' with another click. Type 'a:\setup' in the text box as shown, and then click 'OK'.



After a couple of seconds the installation will begin. Follow the instructions that appear on the screen.

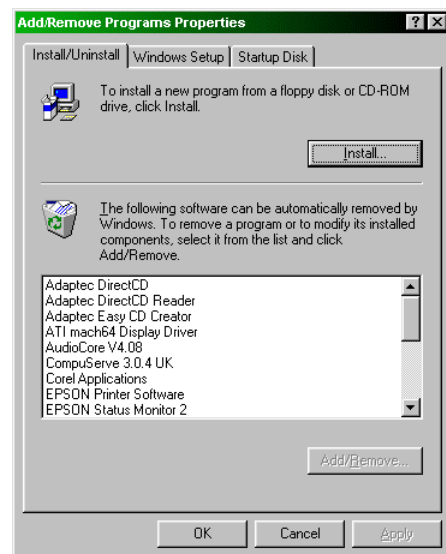


Alternatively, open the control panel by clicking on the 'Start' button, selecting 'Settings' and then 'Control panel'.



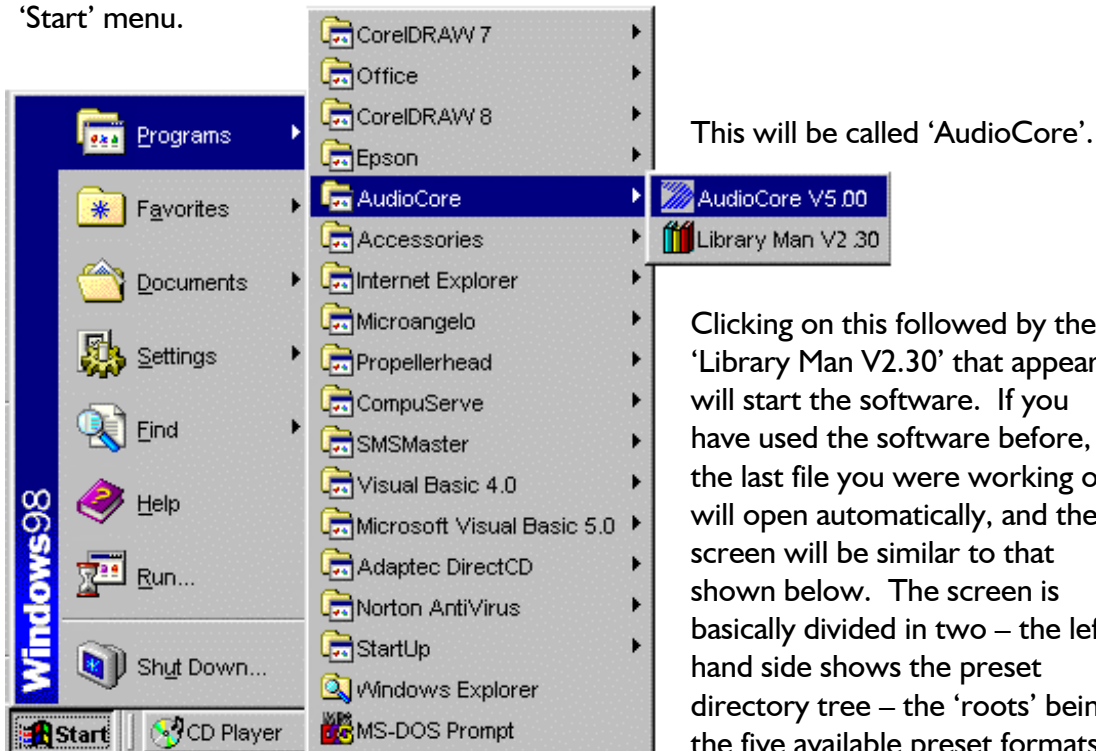
From this window, select the 'Add/Remove Programs' icon, and double click on it, opening the window shown below.

Click on the button marked 'Install...' which will start the software installation wizard. Follow the instructions to install the software.



## Starting the Software

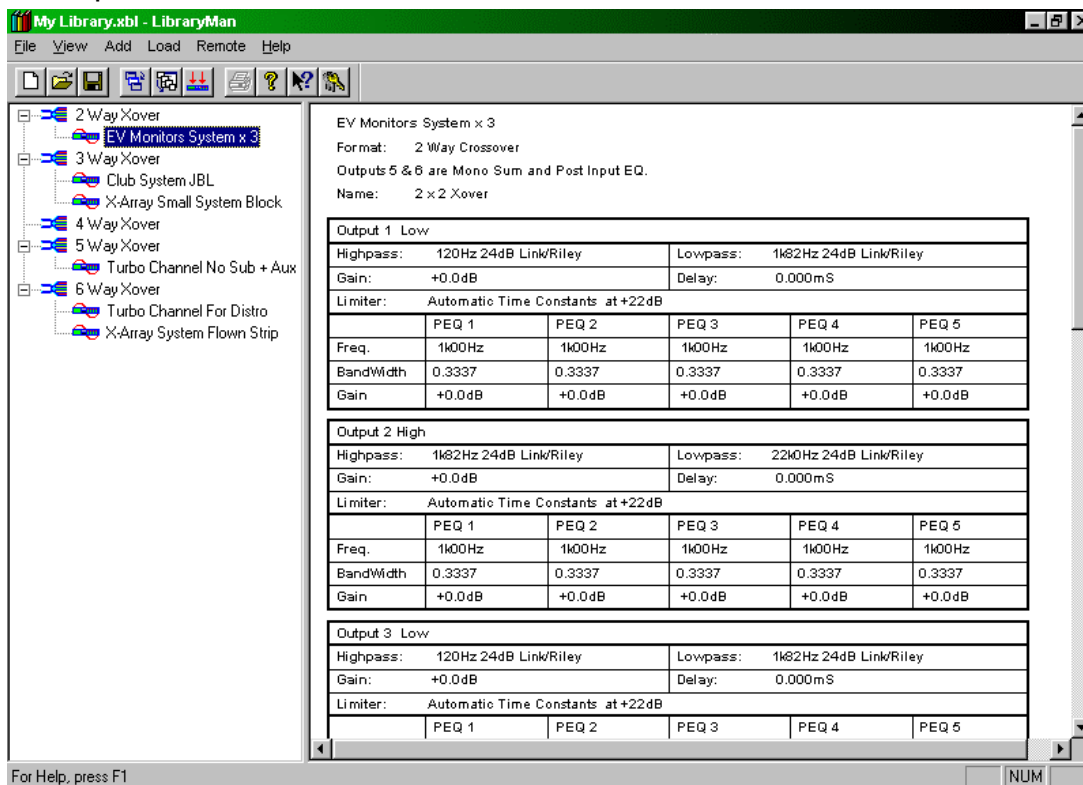
The installation procedure will have created an entry in the 'Programs' list off the 'Start' menu.



This will be called 'AudioCore'.

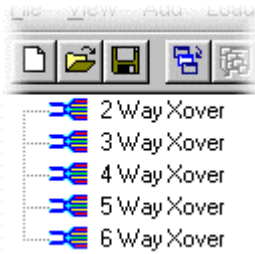
Clicking on this followed by the 'Library Man V2.30' that appears will start the software. If you have used the software before, the last file you were working on will open automatically, and the screen will be similar to that shown below. The screen is basically divided in two – the left hand side shows the preset directory tree – the 'roots' being the five available preset formats

which form the basis of any preset you design. Presets which already exist are shown as expansions of each root.



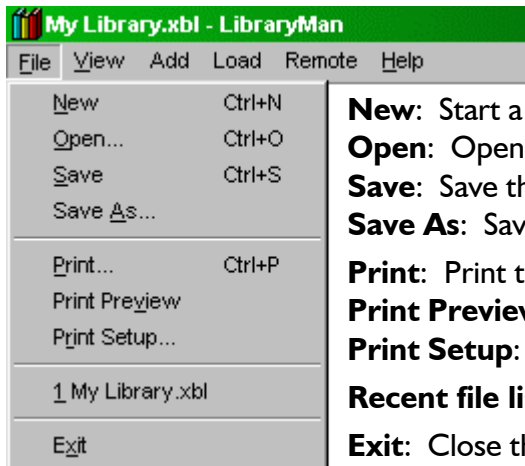
The right hand side of the screen shows a tabular version of preset which is highlighted on the tree – this table is available as a printout by selecting **File ► Print** from the menu toolbar.

Note that the first time the software is started, there will be no predefined presets, and so the preset tree will look like this, with the right hand window displaying the message “No Presets Defined”. The subject of adding presets to the library is covered in the following section, after a brief description of the menu toolbar

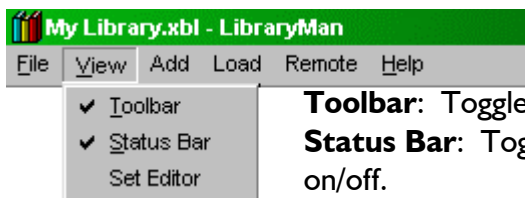


## Menu Bar and Tool Bar Summary Guides

The main menu items are summarised below, along with references where greater explanation is given elsewhere in this manual.



- New:** Start a completely new design.
- Open:** Open an existing Library Manager file (.XBL).
- Save:** Save the current design with name at top of screen.
- Save As:** Save the current design with a new name.
- Print:** Print the details of the highlighted preset.
- Print Preview:** Show preset table printed page layout.
- Print Setup:** Choose printer and format of print.
- Recent file list:** Current design file is shown first (#1).
- Exit:** Close the software.



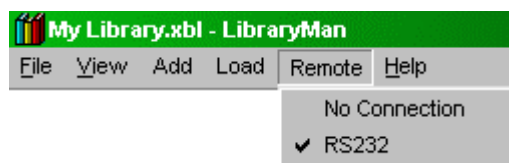
- Toolbar:** Toggle toolbar at the top of the screen on/off.
- Status Bar:** Toggle status bar at the bottom of the screen on/off.
- Set Editor:** Display window for combining preset into a set.



**Add a Preset to Library:** Create a new preset to include in the tree structure on the left-hand side of the screen.



**Load a Preset File to a DP226:** Send a saved binary file to a DP224/6 via the RS232 connection.



**No Connection/RS232:** Toggle between these to disconnect/connect to a DP226. Selection of the RS232 option opens a window to set up the baud rate and choose the port.

### Toolbar Summary

From left to right, the toolbar buttons perform the following shortcuts:

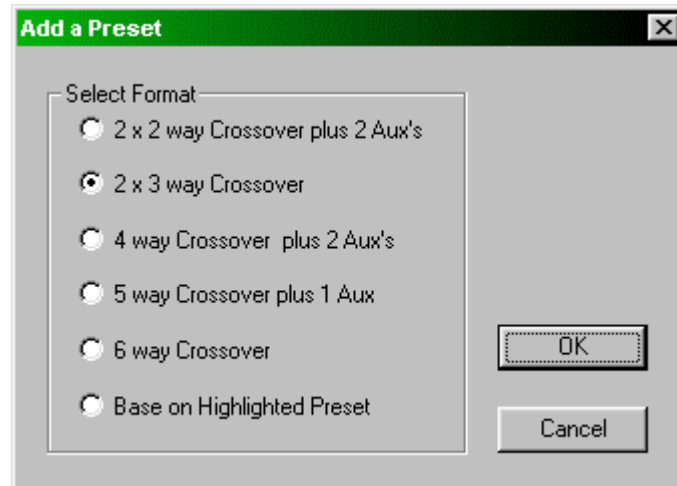
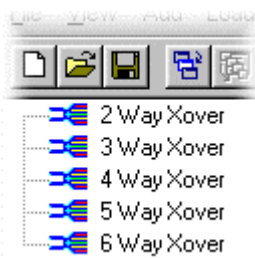


- 1: New design
- 2: Open file
- 3: Save file
  
- 4: Add a preset to library
- 5: Modify sets
- 6: Send a preset file to a DP226
  
- 7: Print preset details
- 8: Software version (About box)
- 9: Help cursor
- 10: Security status



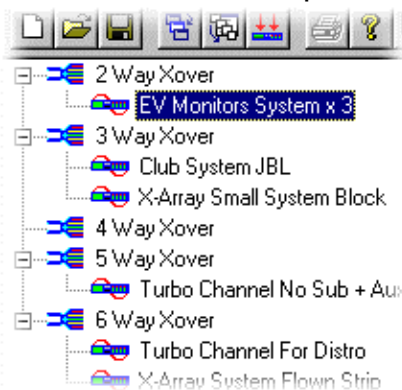
## Adding New Presets to the Library

As mentioned in the previous section describing how to start the software, when designing a library file from scratch, the preset tree will be empty. To add a preset, choose Add ► 'Add a Preset to Library' from the menu toolbar. This will display the window as shown below.



Here, the five available preset formats are listed, along with the option to base the new preset on one that already exists. Choose this option if you want to make a modified version of an existing preset, having first clicked on the preset to 'copy' within the preset tree. Clicking on OK will then begin the design process, which is split into five main sections:

- ✓ Configuration of the preset – this covers the format of the preset (2-way, 3-way etc.) and names for the preset and its output, plus additional settings, dependant on the format chosen;
- ✓ Gains – adjusting the gains of the outputs, mute & phase reverse settings;
- ✓ Delays – adjusting the output delay settings, along with ganging output delay options;
- ✓ Limiters – setting the limiter thresholds and, if not set to automatic, the attack and release times for each output limiter;
- ✓ EQ – individual screens for each output allow adjustment of the crossover filters and all parametric bands.



After designing the preset, clicking on OK will add it to the tree, along with a tabular form, as shown earlier.

To view the contents of the library, either double click on the preset format ('2 Way Xover' etc.) or click on the expand box to the left of the format (the [+] icon). To change an existing preset, double click on its name.

## Configuring a Preset

The screenshot shows the 'Current Settings' dialog box with the following configuration:

- Configuration Tab:** Configuration | Gains | Delays | Limiters | [1] LoSub | [2] Sub | [3] Low | [4] LoMid | [5] HiMid | [6] High
- Preset Name (40):** Turbo Channel For Distro
- Format:**
  - 2 x 2 way Crossover plus 2 Aux's
  - 2 x 3 way Crossover
  - 4 way Crossover plus 2 Aux's
  - 5 way Crossover plus 1 Aux
  - 6 way Crossover
- Options:**
  - Output Ganging
  - Post Eq. for Aux's
- Notes:** (None)
- Output 5:**
  - Input B
  - Mono Sum
- Output 6:**
  - Input B
  - Mono Sum
- Displayed Name (16):** 6 Way Xover
- Output 1:** LoSub
- Output 2:** Sub
- Output 3:** Low
- Output 4:** LoMid
- Output 5:** HiMid
- Output 6:** High
- Filter Definition:** Bandwidth | Q
- Unit Tracking:** Unit Tracking
- Buttons:** OK, Cancel

This tab on the 'Current Settings' window allows the main configuration of the preset to be defined, and deals with the following.

**Preset Name (40)** – This name appears in the library tree under the appropriate format (2 Way Xover, 3 Way Xover etc), and can be up to 40 characters long. It's worth noting that if long names are used, and they are not fully visible after finishing any individual preset, the vertical divider bar between the tree and the table can be moved simply by clicking on it and dragging.

**Displayed Name (16)** – This name appears on the display of the DP226 when the preset is recalled, after being downloaded to the unit. Each output may also be given a name, up to five characters long. These names appear on the editing screens of the DP226.

**Format** – Selects the type of crossover design – choosing 4 or 5 way designs will allow the routing of output 6 (and output 5 for a 4 way crossover) to be defined manually.

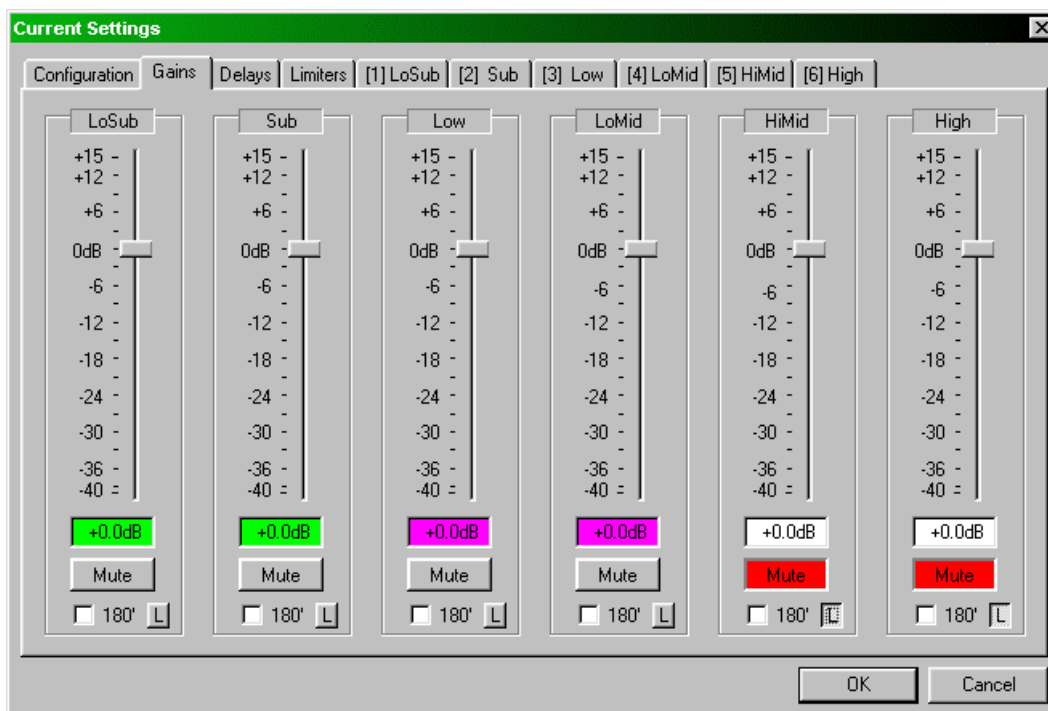
**Options** – Selects output ganging, and if the auxiliary output(s) are pre or post input EQ. The aux EQ option is only available for 4 or 5 way crossover designs.

**Filter Definition** - Selects the readout type for parametric filter 'Q' – either bandwidth (in octaves) or 'Q' factor.

**Unit Tracking** - Open communications between Library Manager and a connected DP224/6 via the RS232 port so that the unit can be controlled in real time.

**Notes** – Scratchpad for additional information about the preset.

## The Gain Screen



Points to note about the operation of this screen are:

- ◆ Clicking on the slider track, rather than the knob will change the gain in 1dB steps.
- ◆ Clicking on the text box below the slider allows direct numerical entry. Press ENTER to accept the new value. To reject a value typed in accidentally, delete all text from the box and click on any other box. The gain will revert to that shown by the slider.
- ◆ Mutes and output phase reverse switches remain un-ganged regardless of the ganging of the gain controls. The ganging may be switched off/on on the 'Configuration' tab of this window.

### Locking Gains and Phase Reverse.

The phase reverse switch may be locked in the final preset by pressing the 'L' button beside the check box. These buttons are ganged when output ganging is on. The gain controls may be locked in the final preset by clicking on the output name at the top of the channel strip. This offers two types of lock. 'Gain Trim Allowed' permits the outputs on the DP226 to be adjusted by  $\pm 6$ dB from the preset value – the output gain screen will be displayed as a 'Trim' screen instead. The gain text box changes to green to indicate this type of lock.



'No Trim Allowed' will cause the output gain screen to be displayed as 'Parameters Locked!' with no adjustment permitted.

The gain text box changes to magenta to indicate this type of lock. Locks are cleared by another click on the relevant output.

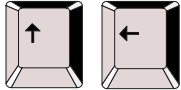
The keyboard may also be used to navigate around the gain screen.



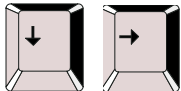
**Accesses** gain sliders/mutes/phase reverse/lock in turn per **channel**.



**Toggles** any **selection** (mute or phase reverse).



Either adjusts **gain up** in 0.1 dB steps



Either adjusts **gain down** in 0.1 dB steps

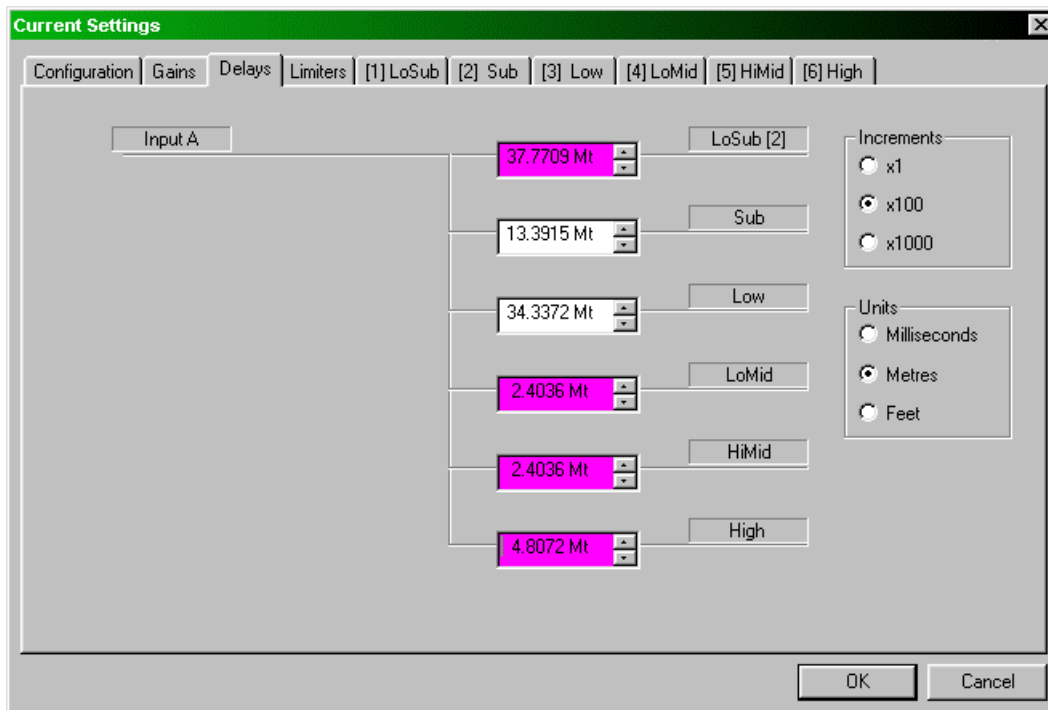


Adjusts **gain up** in 1 dB steps



Adjusts **gain down** in 1 dB steps

## The Delay Screen



The delays screen is relatively straightforward in operation. All output delays for the device are shown as text boxes, allowing numerical values to be directly entered. Additionally the values may be nudged, using the adjacent arrow buttons. The increments that the nudge buttons use are selectable on the right hand side of the screen, as are the displayed units. The smallest increment, 2.6 $\mu$ S, corresponds to a distance offset of less than one millimetre. The maximum available output delay is 166mS.

### Locking and Ganging Delays.

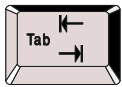
Delays may be locked out of the final preset by clicking on the relevant output name. This also allows outputs to be linked so that they track with an offset. For example, if output 1 has a delay of 100mS, and is then linked to output 2 with a delay of 25mS, it will actually assume a delay of 125ms – i.e. it will remain 100ms behind output 2 from now on. Locked delays appear with the 'Parameters Locked!' message displayed on the DP226, however, if outputs are linked, the message will be of the form:



The delay text box changes to magenta to indicate lock. A number in brackets after an output name indicates linkage to another output – the diagram shows output 1 linked to output 2.

Locks and links are cleared by another click on the relevant output.

There is limited keyboard control on this screen:



Move around the various text boxes and option buttons on the screen.

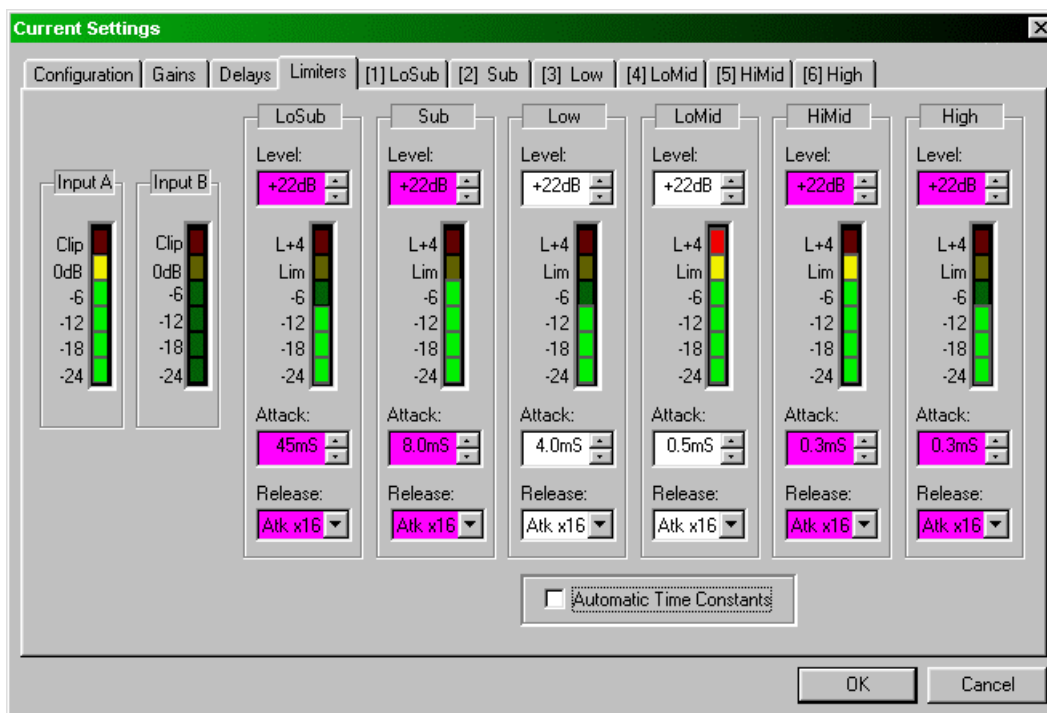


Change option button selections, or increase delay in the current increments.



Change option button selections, or decrease delay in the current increments.

## The Limiter Screen



The limiter screen permits access to all the output limiters at once, along with real time metering of all input and output channels (if unit tracking is enabled – selectable on the 'Configuration' tab of this window). The threshold above which limiting may take place is set in the appropriate 'Level' text box at the top of the output channel section. This box will accept direct numerical entry (in 1dB steps), and may additionally be nudged using the adjacent arrow buttons.

If the 'Attack' and 'Release' text boxes are greyed out, it is because the 'Automatic Time Constants' tick box is enabled. This sets the attack time of the channels limiter dependant on the high pass filter frequency – the lower the frequency, the slower the attack time of the limiter. Release times become fixed at sixteen times the attack time.

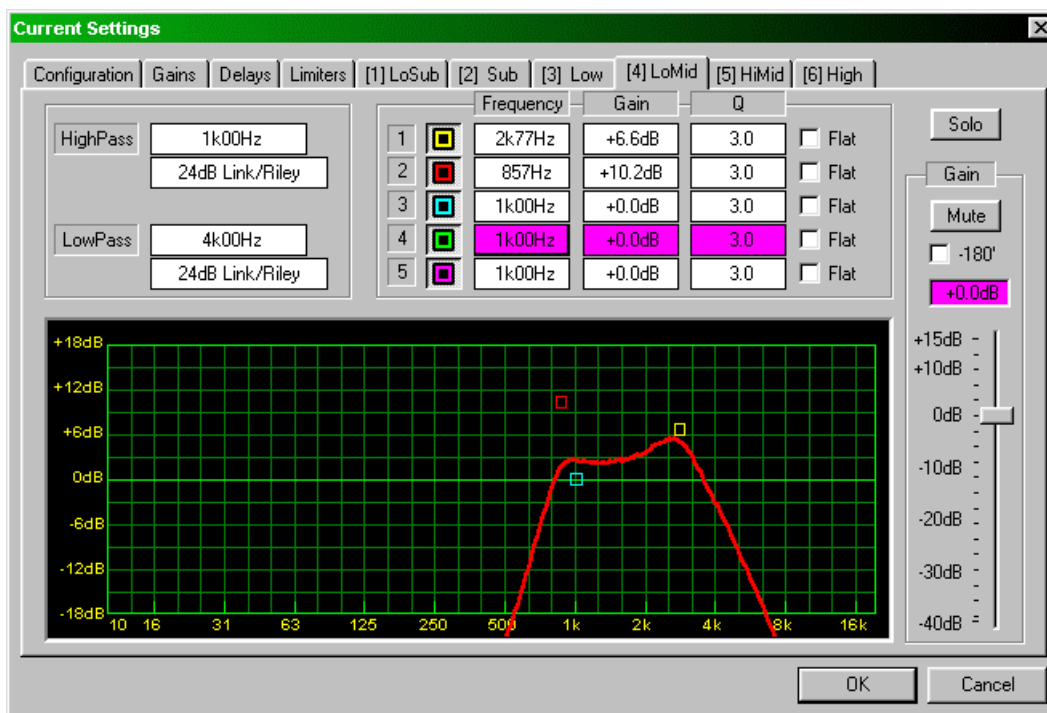
Note that it is not possible to type numerical values into the 'Attack' time text boxes. The nudge buttons will step through a set of available times for the limiter attack. The meters time constants will automatically assume the same behaviour as those of the limiter envelope to provide the best representation of the power usage for that channel. Please consult the DP226 manual for details of the 'Auto' time constants.

### Locking Limiters.



Limiters may be locked out of the final preset by clicking on the relevant output name. The text boxes changes to magenta indicating lock.

## The Equalisation and Crossover Screens



The most important areas of the screen are the frequency response curve which may be edited simply by dragging portions of the curve to produce the desired response, and the direct filter control section just above this.

### Editing with Curve Drag Features

There will be 5 bands of equalisation available for editing. These appear on the curve as nodes marked by coloured squares, denoting the centre frequency of any particular band.

Points to note about the operation of the curve dragging are:

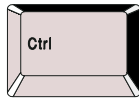
- ◆ To move a parametric band, click and hold the left mouse button over the appropriate node to select it. The mouse pointer will change to a cross to show correct positioning over a node.
- ◆ When selected the pointer changes to a pair of crossed arrows. The centre frequency and the gain may now be adjusted simply by dragging the node to the desired position and releasing the mouse button.
- ◆ The 'Q' of the filter may be adjusted using the scroll wheel (on Intellimouse devices only) – whilst the node is selected (left button pressed) turning the scroll wheel adjusts the 'Q'.



The keyboard may also be used to adjust filter settings; not just on it's own, but also to enhance the feature available during curve dragging.



Holding down 'Shift' while dragging locks the frequency of the filter, whilst allowing the gain to be adjusted.



Holding down 'Ctrl' while dragging locks the gain of the filter, whilst allowing the frequency to be adjusted.

If your mouse does not have a scroll wheel, then the page up and down buttons may be used to adjust the 'Q' during curve dragging.



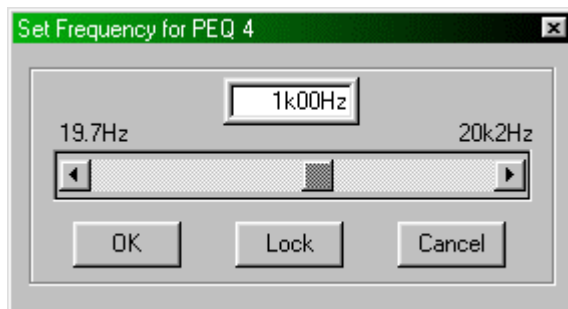
Whilst a filter is selected (left mouse button down) pressing 'Page Up' will increase the filter 'Q' by one step.



Whilst a filter is selected (left mouse button down) pressing 'Page Down' will decrease the filter 'Q' by one step.

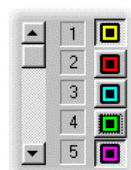
### Editing with Direct Filter Control

The direct filter control allows precise details to be entered via the filter list. Clicking on any filter parameter will display a small window with a text box and scroll bar or slider for the relevant parameter.



A number may be directly entered into the text box – in the case of the frequency screen shown here, either in Hertz (1000 for 1kHz), or as an abbreviation such as '1k' or '1.00k'. The closest available value will be chosen. The scroll bar allows the frequency to be nudged, either in 1/36<sup>th</sup>

octave steps with the arrows, or in 1 octave steps by clicking to the left or right of the current position.



The set of buttons showing the filter markers for the curve view may be toggled on or off – this does not bypass the filter (it's contribution to the overall response remains part of the curve) – it merely stops it being editable via curve dragging.

Depending on the parameter selected, the keyboard may be used to adjust the value:



Frequency: nudges in 1/36<sup>th</sup> octave steps

'Q': nudges one step



Gain: nudges in 0.1 dB steps



Frequency: nudges in 1 octave steps

'Q': nudges ten steps



Gain: nudges in 1 dB steps

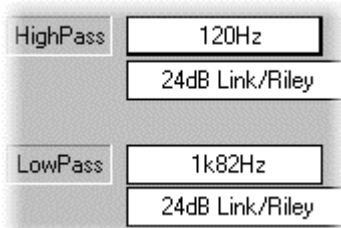
### Parametric or Shelving Filter Behaviour

Note that it is possible to change the behaviour of any filter section from parametric to shelving by accessing the 'Q' setting. The filter must have its gain set to 0dB to allow the behaviour to be changed. Ticking the 'Lo Shelf' or 'Hi Shelf' boxes will swap to a shelving response; clicking on the scroll bar or entering a 'Q' setting in the text box will swap back to a parametric response.

Each filter may be 'flattened' by use of the 'Flat' tick box to the right of its settings. This effectively sets the gain of the filter to 0dB, but does not affect the parameters stored. The response shown by the curve will change accordingly, but it should be noted that the respective filter marker remains in place.

### Crossover Settings

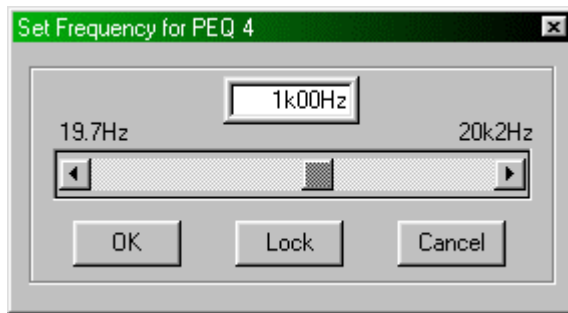
When editing an output channel, a pair of high and low pass filters are available, either for use as general protection subsonic and supersonic filters, or as accurate crossover filters. They appear on the left-hand side of the pane and operate in the same way as the direct filter control section.



Clicking on the frequency box will display a window permitting frequency adjustment, just as for parametric sections. The box detailing the filter type (response and roll-off characteristics) may similarly be accessed, and the required type chosen from the list displayed.

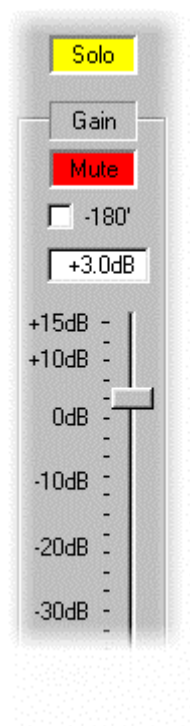
The effect of the crossover filters on the overall channels frequency response is included in the curve display. It should be noted that it is not possible to drag the high and low pass filters in the same way as parametric sections – this is for safety's sake to avoid inadvertent removal of protection filters and possible damage to subsequent components.

### Locking the EQ and Crossover.



Individual parametric sections, and the high and low pass crossover filters may be locked out of the final preset by clicking on the relevant filters frequency box, and pressing the 'Lock' button. The parameter text boxes for the locked filter changes to magenta to indicate lock.

### Additional Controls and Notes



Output sections all have gain controls accessible from the EQ pane, in addition to mute, phase reverse, and solo functions. The solo function, when active, mutes the other outputs on the connected device. The gain control is the same one that is accessed on the gain screen.

Note that a locked gain control will appear as a magenta text box, regardless of whether gain trim is permitted or not.

It is normal to use output equalisation for 'box' compensation and input equalisation for 'room' compensation – the implication being that the crossover EQ filters are then dedicated to the speaker system and are independent of the environment in which the system is used. However, as with all crossovers, analogue or digital, if output equalisation is used near the crossover point, the phase of that output will alter relative to the other outputs (and drivers).

## File Locking

---

When Library Manager saves a library file (extension .XBL), it is possible to password protect the file. This will allow distribution of the file for users to load presets directly into Audiocore, where all parameter locking is maintained, but does not allow users with a copy of Library Manager to load them (unless they have the password).



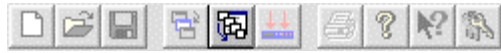
The password is entered by pressing the lock button on the toolbar, displaying the window shown below. Note that this button also shows whether password locking is currently being used – the button remains depressed.



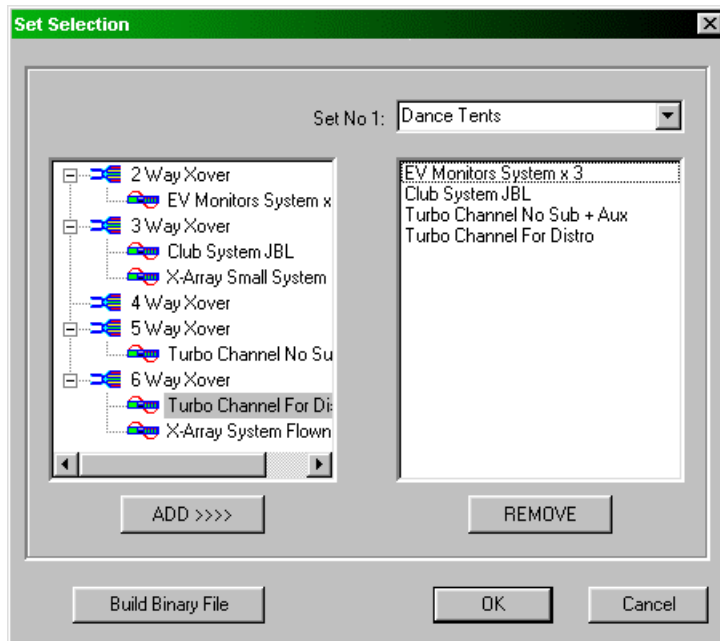
When a password (4 digit number) has been entered and set, this will be stored in the configuration file on the computer, so by setting this code once and *not* changing it, the program will be able to load library files without intervention. Only when loading a library file with a different password code will it be necessary to enter a code.

## Assembling Presets into a Set

After designing all the required presets, there are a few stages to go through prior to sending the information to the unit(s). Firstly, the presets required for a particular set must be decided upon and built into a file.



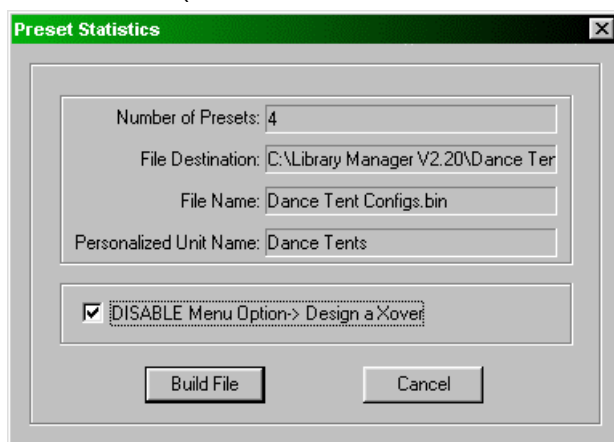
Pressing the 'Modify Sets' button on the toolbar, or choosing View ► Set Editor from the menu bar will display the 'Set Selection' window as shown below.



To compile a set of presets for download, highlight each one in turn, and press the 'ADD>>>' button, whereupon the preset name will be copied over to the right hand pane. To remove a preset from the set, select it in the right hand pane, and press 'REMOVE'.

Up to 16 sets containing any combination of up to 40 presets. The set name, which is entered above the right hand pane, is shown when the DP226 switches on – a way of personalising and quickly identifying which unit contains which presets.

To compile a set, click on the 'Build Binary File' button. This will display the window shown below (after the standard Windows 'Save' box where the filename is entered),



detailing the statistics of the file – how many presets are in the file, what it is called etc.

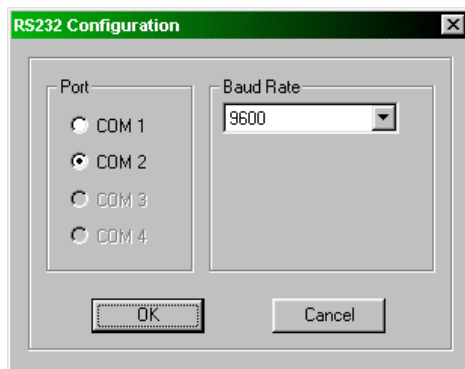
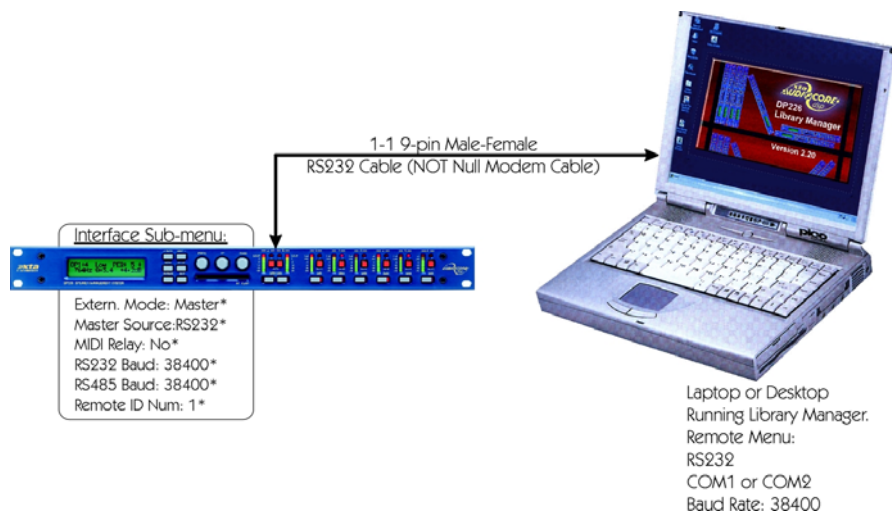
Clicking on 'Build File' will complete the process. Note the option to disable the 'Design a Xover' menu within the DP226. If ticked when the file is built, the user of the DP226 will see a message saying 'Option Not Available' if attempting to design a new crossover on the unit itself.

## Connecting a DP226 to the Computer

It is only possible to connect the unit using an RS232 port for download of presets or unit tracking. RS232 uses a serial port connection from the computer (normally a 9-pin D-connector for Com1 ports) and allows remote control of one unit directly.

### RS232 Connection (Single Unit)

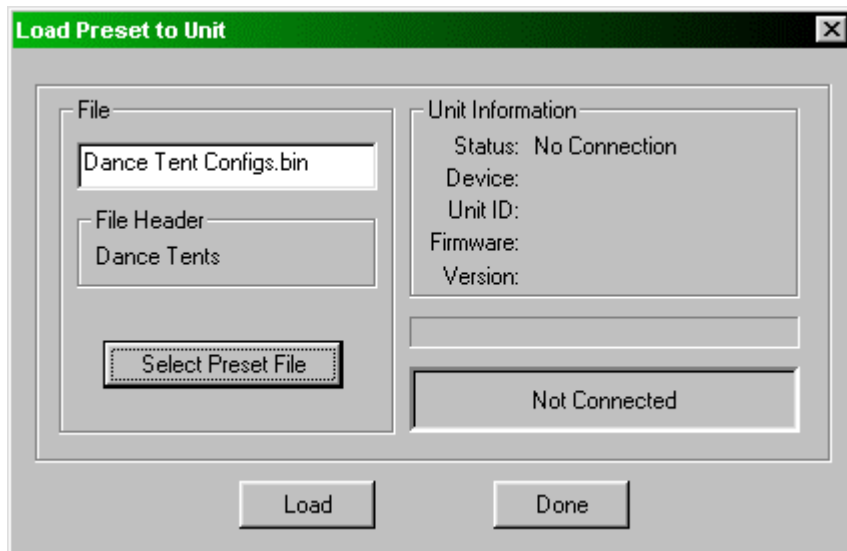
A typical interface set-up might involve running an RS232 link from laptop or a desktop computer to a DP226 set up as a master unit. The diagram below shows this method of connection; the required menu options are also given.



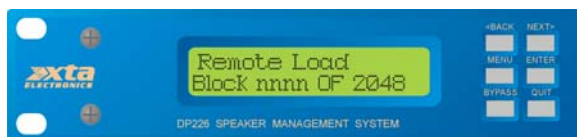
The RS232 menu options are accessible through the Remote menu on the menu bar. Selecting RS232 will display a window as shown below, where the choices of COM port and baud rate are made.

## Downloading the File to a Unit

Clicking on 'OK' after the build screen, as explained in the 'Assembling Presets into a Set' section will automatically ask do you want to download this file to the unit – clicking on 'Yes' will display the window shown below, with the file just built already selected. This window is the same as that shown when the 'Load a Preset File to a DP226' is selected from the 'Load' menu, or the toolbar button is pressed.



If another preset file is to be loaded, press the 'Select Preset File' button. Pressing the 'Load' button will begin the procedure. The DP226 will display a message detailing the progress. This is shown below.



The number 'nnnn' will increment and, when complete, the unit will re-start. In reality, the download is very fast and you may not even see the message if your preset file is small.

Note that downloading a preset file will overwrite all other presets in the unit, even if the new file is smaller. It is not possible to download a file of 25 presets followed by a file of 5, and for both sets to co-exist, even though there is space in the unit's memory. The latest set always overwrites the entire memory.



This procedure can be invoked directly by pressing the download button as highlighted on the toolbar above. This allows any binary file (already built from a selection of presets) to be downloaded directly to a unit.

Presets stored by Library Manager in a unit are written to EEPROM, as opposed to RAM (where user crossovers are stored from the unit front panel) – because of this they cannot be overwritten by the DP226, accidentally or otherwise. Additionally, they do not require a battery to maintain them due to the nature of EEPROM, and so are very safe.

# Frequently Asked Questions



How can I print out a Library Manager screen?

To print out a preset from Library Manager, select which preset you want to print in the left hand pane containing the preset tree, and then click on the printer button on the toolbar.



This will print out a tabular version of the preset details, along with a plotted frequency response curve for each output, like this...

**Page 1**

Preset 1  
Format: 3 Way Crossover  
Name: 2 x 3 Xover

Output 1 Low	
Highpass: 22.1Hz 24dB Link/Riley	Lowpass: 120Hz 24dB Link/Riley
Gain: +0.0dB	Delay: 0.000mS
Limiter: Automatic Time Constants at +22dB	
PEQ 1	PEQ 2
PEQ 3	PEQ 4
PEQ 5	
Freq. 1k00Hz	1k00Hz
Q 3.0	3.0
Gain +0.0dB	+0.0dB

Output 2 Mid	
Highpass: 120Hz 24dB Link/Riley	Lowpass: 1k82Hz 24dB Link/Riley
Gain: +0.0dB	Delay: 0.000mS
Limiter: Automatic Time Constants at +22dB	
PEQ 1	PEQ 2
PEQ 3	PEQ 4
PEQ 5	
Freq. 1k00Hz	1k00Hz
Q 3.0	3.0
Gain +0.0dB	+0.0dB

Output 3 High	
Highpass: 1k82Hz 24dB Link/Riley	Lowpass: 22k0Hz 24dB Link/Riley
Gain: +0.0dB	Delay: 0.000mS
Limiter: Automatic Time Constants at +22dB	
PEQ 1	PEQ 2
PEQ 3	PEQ 4
PEQ 5	
Freq. 1k00Hz	1k00Hz
Q 3.0	3.0
Gain +0.0dB	+0.0dB

Output 4 Low	
Highpass: 22.1Hz 24dB Link/Riley	Lowpass: 120Hz 24dB Link/Riley
Gain: +0.0dB	Delay: 0.000mS
Limiter: Automatic Time Constants at +22dB	
PEQ 1	PEQ 2
PEQ 3	PEQ 4
PEQ 5	
Freq. 1k00Hz	1k00Hz
Q 3.0	3.0
Gain +0.0dB	+0.0dB

Output 5 Mid	
Highpass: 120Hz 24dB Link/Riley	Lowpass: 1k82Hz 24dB Link/Riley
Gain: +0.0dB	Delay: 0.000mS
Limiter: Automatic Time Constants at +22dB	
PEQ 1	PEQ 2
PEQ 3	PEQ 4
PEQ 5	
Freq. 1k00Hz	1k00Hz
Q 3.0	3.0
Gain +0.0dB	+0.0dB

Output 6 High	
Highpass: 1k82Hz 24dB Link/Riley	Lowpass: 22k0Hz 24dB Link/Riley
Gain: +0.0dB	Delay: 0.000mS
Limiter: Automatic Time Constants at +22dB	
PEQ 1	PEQ 2
PEQ 3	PEQ 4
PEQ 5	
Freq. 1k00Hz	1k00Hz
Q 3.0	3.0
Gain +0.0dB	+0.0dB

**Page 2**

Preset 1

**Note that, unless you click back in the right hand pane (containing the table) the print button will remain greyed out and unavailable.**







How do I output RS232 from my computer?

RS232 comes from one of your COM ports as standard. All you will need to do is plug a 1 to 1 9-pin to 9-pin serial cable (NOT a 'null modem' cable) from the correct COM port on the back of your machine to the external port on the DP226. See the section entitled 'Connecting a DP226 to the computer' for more details.



What is the purpose of building a set?

The purpose of building a set of presets, as opposed to downloading them individually, is to give the flexibility of loading specific presets from a library, rather than them all. Up to 16 sets, each containing up to 40 presets, can be compiled from any one library file, allowing many combinations of presets to be stored. A binary file can then be created from one of these sets and downloaded to a unit.



When do locks set on each editing screen become effective?

Locks only become effective when the binary file containing the presets is downloaded to the DP226 and the preset is recalled on the DP226 itself.



How do I delete a preset from a library?

Highlight the required preset in the left-hand pane (preset tree) and press 'Delete' on your keyboard – confirmation will be requested.



What do I do if I lose my file password?

If a password is inadvertently lost, the file itself will have to be sent to XTA to be cracked – there is no master password!

## Troubleshooting Guide

---

If your unit is not responding properly, check the following points before contacting XTA for help...



Is the DP226 set to “Master Source: RS232” in the interface menu?  
Check by entering the interface menu and pressing ‘Enter’. Full details are available in the DP226 manual.



Is the DP226 set to “Extern. Mode: Master” in the interface menu?  
Check by entering the interface menu and pressing ‘Enter’. Full details are available in the DP226 manual.



As above (for comms setting of the DP226), is the unit set to “Remote ID Num = 1”?



Does the baud rate of the DP226 for RS232 comms match that of the computer – interface menu on the ‘226, Remote Menu on the software?



Has the correct COM port has been selected on the RS232 window in the software?



Are the leads OK? The 9-pin lead must be a 1 to 1 variety and **not** a ‘Null Modem’ cable.



Try altering the baud rate at both ends of the link – to use 34k400, your PC must use 16c550 UARTs for its COM ports.