

## DC1048 Integrated Audio Management

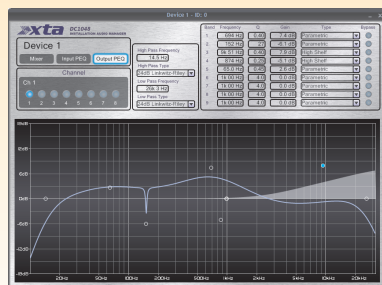
### Local and remote.

Remote touch sensitive wall panels allow for quick recall of up to four presets (with the facility to program an offset for different banks). These panels can be paralleled up around a venue so any one will trigger a system-wide recall, with messages relaying via RS485.

An additional control line allows for an override memory to work with emergency evacuation systems.



Empowered By  
**ICORE**



Via either the front USB or an RS485 link the DC1048 network can be completely configured under the new **ICORE** software package, along with **MC<sup>2</sup>** Ti Series Networked Audio Components.

Set up of timed preset recalls along with full real time monitoring offer complete peace of mind. Then just unplug the USB and you're good to go!



## DC1048 Integrated Audio Management



**Matrix, Processing & Peace of Mind**  
The new DC1048 from XTA

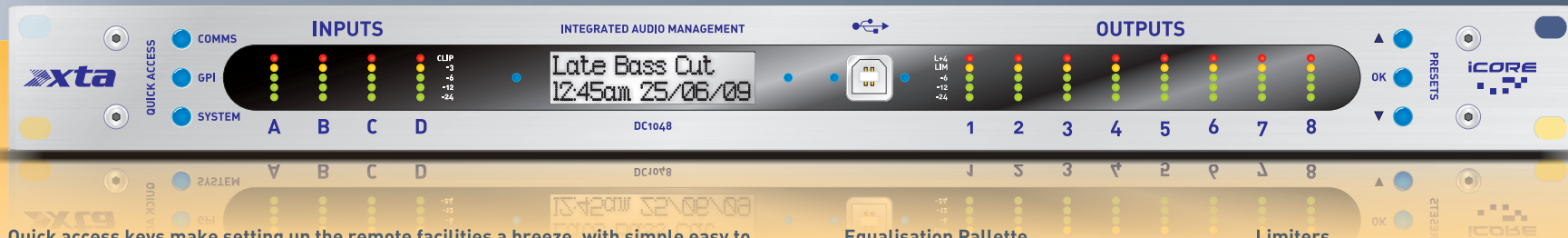


## Features

Offering full matrix mixing and a palette of EQ functions to satisfy even the most demanding application, the DC1048 doesn't compromise your processing.

24-bit high end converters coupled with a 96k sample rate, ensure a bandwidth in excess of 30kHz and a dynamic range of over 112dB.

xta's world class limiters, offering unrivalled transparency, give peace of mind when configuring a system to "set and forget".



Quick access keys make setting up the remote facilities a breeze, with simple easy to remember menus. Preset recalls may also be actioned from the front panel.

The real time clock and calendar in each unit allows for the set-up of fully automated preset recalls, so your system can seamlessly adapt in the background with no need for user intervention.

Display and guide LEDs fade up when the unit is locally accessed, with the display fading up independently when remotely accessed.

### Equalisation Palette

- EQ bands - 8 per input, 9 per output
- Each band can be switched to Bandpass, Allpass, Notch, VariQ, Shelf and Elliptical response
- Any band may also be used as a phase filter with 2 degree accuracy

### Crossover Filters

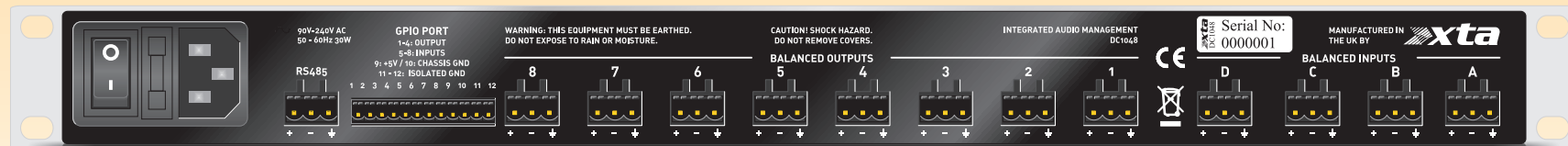
- Bessel/Butterworth 6/12/18/24/48dB per octave
- and Linkwitz-Riley 12/24/48dB per octave

### Limiters

- Program limiter with look ahead response, and attack time from 0.3 - 90mS and release time from 4 - 16x attack time. Automatic option for taking care of these!
- DMax clip limiter for setting absolute output level with look ahead attack time, and variable release

### Matrixing

- Full matrix 4-8 mixing with 650mS delay available on every output along with polarity switching



With a GPIO interface built in, along with the USB easy access front panel connector, and RS485 networking, it's easy to get your system configured and then left secure with only remote access via the touch panels (or any other system you choose).

As with all xta products, excellent sound quality is assured through the heritage of the 4 Series processing platform, and the use of high resolution, high sample rate audio converters.

### Audio Inputs and Outputs

- Electronically balanced on 3 pin "Phoenix"
- Input impedance > 10k Ohms
- Input CMRR > 65dB 50Hz - 10kHz

### Remote Connections

- USB front panel socket for local control
- RS485 rear panel for network
- USB-RS485 conversion

### GPIO Connections

- GPI port opto-isolated inputs
- GPO "open collector" isolated outputs
- Designed for use with xta remote panels
- May be used with other systems